

Facts about Fibertex

Fibertex Nonwovens is a market-leading manufacturer of nonwovens for industrial and technical applications.

With corporate office in Aalborg, Denmark, and manufacturing sites in Denmark, the Czech Republic, France, the USA, Turkey, South Africa and Brazil, Fibertex is globally represented. Since its foundation in 1968, Fibertex has continuously expanded and today manufactures nonwovens for customers all over the world for many different applications.

Focus on high quality and competitiveness

Fibertex is a pioneer with more than 40 years of experience in nonwovens technologies. Innovation and product development are two of Fibertex' strengths. We constantly strive to design the best and most competitive materials also for the mattress industry.

Successful solutions through partnership

As an expert Fibertex offers partnership and professional advise. The global input from our customers in the bedding industry makes Fibertex the optimal partner when it comes to developing products and services.



Making the perfect match

Spunbond



Fibertex Nonwovens A/S

Svendborgvej 16
DK-9220 Aalborg
Denmark
Tel. +45 96 35 35 35
Fax +45 98 15 85 55
fibertex@fibertex.com

Fibertex Nonwovens, a.s.

Prumyslova 2179/20
CZ-568 02 Svitavy
Czech Republic
Tel. +420 461 573 211
Fax +420 461 541 437
salescz@fibertex.com

www.fibertex.com

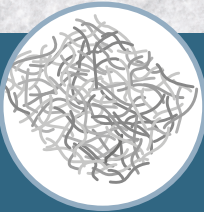
Needlepunch

Needlepunch

versus

Spunbond

Carded, mechanically entangled and thermally bonded



Needlepunch for strength and durability

Needlepunched nonwovens are high-strength textile-like fabrics made of staple fibres. They are designed to last and provide the mattress with long-term comfort and durability. The noise-free textile-like surface and the high-strength characteristics have made the needle-punched nonwovens a successful component for pocket springs and mattresses for more than 25 years.

Needlepunched nonwovens are carded and mechanically entangled (needlepunched), so that every single fibre is first bonded into the web and then thermally bonded. This ensures high abrasion resistance and eliminates any risk of delamination. The result is an extraordinary strong and tough fabric with extreme antipilling characteristics.

Different weights, surfaces and blends of the fibres are selected according to customers' individual requirements for strength, abrasion resistance, durability and softness.



Silent
Very silent fabric for noise-free products

1
Noise reduction

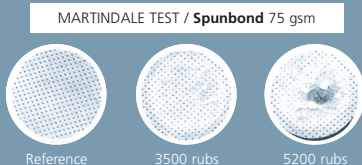
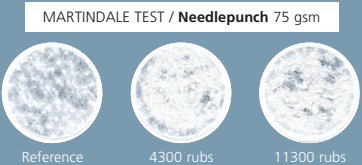
Moderate noise
Noise-reducing fabric, not silent



Long lifetime
Extended abrasion resistance

2
Durability

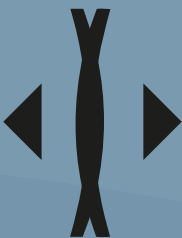
Moderate lifetime
Friction and abrasion sensitive



Extreme contact
Doubled strength due to optimal contact with the three-dimensional fibre structure

3
Glue strength

Satisfactory contact
Satisfactory strength due to contact with surface layer only



Good strength
Long lasting endurance is ensured by using fibres with different melting points

4
Welding strength

Average strength
All filaments melt when welded due to only one type of polymers



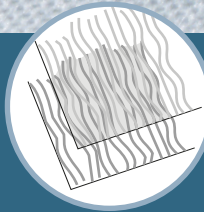
Textile-like
Soft textile surface

5
Texture

Compact
Compact and less textile-like



Thermally bonded



The use of spunbonded nonwovens is an alternative to needlepunch in mattress manufacturing when long-term durability and noise reduction are not top priorities.

Spunbond is a nonwoven consisting of two or three individual layers of continuous filament made of the same polymer.

These layers are thermally bonded (calandered). This bonding gives the spunbonded nonwoven an even surface with a characteristic embossed pattern. Optimising the bonding and avoiding stiffness is one of the critical elements in spunbond manufacturing.

The result is a nonwoven fulfilling basic requirements for pocket springs and mattress construction.

