

HORTICULTURE

# Fibertex capillary mats for sub-irrigation



**Having optimum growth conditions in nurseries and greenhouses truly pays off. Fibertex capillary mats enable efficient and controlled sub-irrigation.**

Benefits with Fibertex capillary mats:

- Controlled water and fertilizer distribution in optimal amounts – more uniform growing of each plant
- Good and uniform water storage, thus avoiding dry spots or spots with less water and fertilizer. All plants are properly cared for and have the best growing conditions
- Improved quality of each plant
- Reduction of disease, fungus and rot due to controlled water hold
- Great strength even in wet conditions
- Long durability – can be reused many times. Easy to clean with a high pressure cleaner



*Good filter properties*



*Certain plants require extra careful growing conditions.*



*Match any bench size up to 540 cm*



[www.fibertex.com](http://www.fibertex.com)



## PPR 433 – The best choice

The most used type of capillary mat for all sorts of nurseries and greenhouses. Designed to provide excellent balance between capillary action and water retention capacity. Optimal water/fertilizer distribution even on sloping benches. Excellent capillary function and exact control of the dry-wet cycle can be achieved. Uniform water distribution.

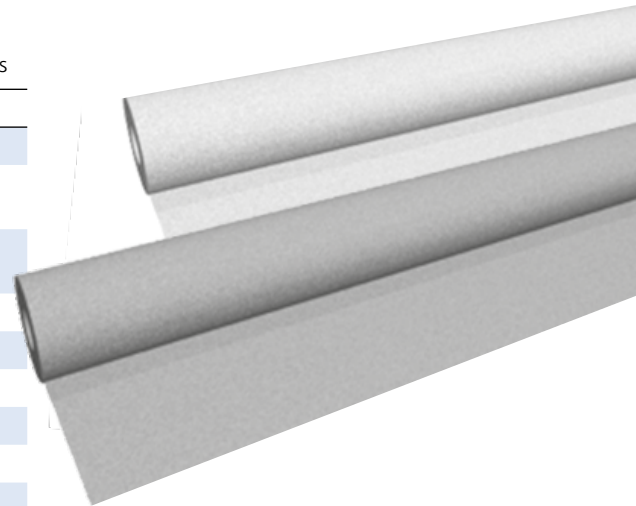
## F-80 – Best choice for good filter properties

Developed for ebb and flood benches where its main function is filtering. By using F-80, dirt is avoided in the nozzles and the irrigation system. Further, the mat will absorb the remaining moisture after ended irrigation, and distribute this evenly to the plants.

### Technical data

Indicative values

	Norm	PPR 433	F-80
Specification		4503	4140
Weight	DIN 53 854 / EN ISO 9864	150 g/m <sup>2</sup>	80 g/m <sup>2</sup>
Thickness	DIN 53 855 / EN ISO 9863-1	1.0 mm	0.6 mm
Water retention	DIN 53 923	0.8 l/m <sup>2</sup>	0.24 l/m <sup>2</sup>
Capillary lift	DIN 53 924	8.0 cm	7.0 cm
Fibre content		PP/PET/VIS	PP/PAC
Colour		Grey	White
Standard roll length		100 lin m	200 lin m
Max. roll width		540 cm	540 cm



PP = Polypropylen PET = Polyester VIS = Viscose PAC = Polyacryl

### Fibertex Nonwovens

is a market leading manufacturer of nonwovens. With corporate office in Denmark and manufacturing sites in Denmark, the Czech Republic, France, the USA and South Africa, Fibertex Nonwovens is globally represented. Fibertex Nonwovens has continuously expanded its activities and today we manufacture nonwovens for customers all over the world for many different applications. Our diversified and cutting edge technology enables us to supply competitive high performance products.

To learn more see [www.fibertex.com](http://www.fibertex.com)

### Please contact our local distributor:

---



[www.fibertex.com](http://www.fibertex.com)