

# Vacuum bagging and pre-preg



## Compoflex® saves production time and costs – all-in-one

The Compoflex® products are breathable microporous peeling materials, designed to replace up to three consumables with a single layer. Compoflex® offers direct benefits:

■ **Time and cost savings – less time in the mold**

Compoflex® can replace three consumables – peel ply, release film and breather. Fewer consumables and easy lay-up combined with easy peeling reduce costs and handling time, simplifying the process considerably and thereby ensuring more output from the individual molds.

■ **Uniform bleeding**

Random microporous perforation style enables uniform bleeding and thereby stronger and lighter laminates. Furthermore, overlapping is possible without jeopardising laminate quality.

■ **Superior peeling properties**

The microporous surface and the low surface tension of PP nonwovens ensure that Compoflex® peels at one-fifth of the force needed to peel conventional peel ply.

■ **Easy peeling minimises resin dust**

Compoflex® peels easily, and hardened resin remains in the liner, reducing the amount of airborne resin dust. Traditional peel ply generates resin dust activity, causing an unhealthy working environment.

*Distributed by:*



# Compoflex®

Easy lay-up, superior peeling and bonding properties\*

	Thickness at 2kpa ISO 9863-1	Max. width	Max. width	Easy peel ply	Medium bleed release film style	Low-medium release film style	50g (2oz) breather	150g (5oz) breather	300g (10oz) breather	Generates smooth surface	Generates rough surface for secondary bonding	Low pressure cure	Medium-high pressure cure	Recommended use
<b>CF 150</b>	0.6 mm	4.5 m / 177.6 in	305 cm <sup>3</sup> /m <sup>2</sup>	•	•		•			•		•		Pre-preg
<b>CF SB 150</b>	0.6 mm	2.1 m / 82.9 in	305 cm <sup>3</sup> /m <sup>2</sup>	•		•	•				•	•		Pre-preg
<b>CF 250</b>	1.0 mm	4.5 m / 177.6 in	810 cm <sup>3</sup> /m <sup>2</sup>	•	•			•		•		•		Pre-preg
<b>CF SB 250</b>	1.0 mm	2.1 m / 82.9 in	810 cm <sup>3</sup> /m <sup>2</sup>	•		•		•			•	•		Pre-preg
<b>CF 400</b>	1.5 mm	4.5 m / 177.6 in	1135 cm <sup>3</sup> /m <sup>2</sup>	•	•				•	•			•	Hand lay-up
<b>CF SB 400</b>	1.5 mm	2.1 m / 82.9 in	1135 cm <sup>3</sup> /m <sup>2</sup>	•		•			•		•		•	Hand lay-up

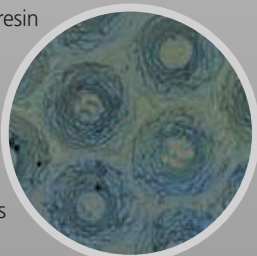
\* Bonding properties depends on resin and adhesive

## General information

**Composition:** 100% PP

**Resin:** Works well with polyester, vinylester, epoxy, phenolic and other types of resin, but testing is always recommended.

**Surface preparation / Secondary bonding:** Compoflex® SB products may reduce or eliminate the need for sanding or abrading. Compoflex® SB generates approx. 50% more surface area for bonding compared to standard Compoflex® and approx. 30% more than traditional peel ply. Best results are achieved with epoxy resin. Some resin types made from polyester or vinylester do not leave a bondable surface due to additives that need to be removed by sanding. Please consult your resin supplier for information about the resin additives. Testing on small parts is always recommended. Secondary bonding lab test results can be provided upon request.



Compoflex® SB surface approx. 50% more bonding area due to high rounded structures.

Data and safety data can be downloaded from our web page [www.compoflex.dk](http://www.compoflex.dk)

## Working temperature

Recommended max. working temperature is 144°C (293°F). The melting point for polypropylene is 165°C (329°F). However, it is possible to use Compoflex® at 200°C (392°F) due to the fact that Compoflex® performs before the temperature exceeds the melting point. After cooling, the material becomes stable again, and peeling is just as easy as normal. We recommend conducting a test on a small part first.

## Certified

Fibertex Nonwovens is certified according to EN ISO 9001 and ISO 14001, and Compoflex® is manufactured according to current European technical and environmental regulations.

## Contact us

For specific input on how Compoflex® will optimise your production time and costs, please contact your local distributor or Fibertex Nonwovens:



Business Manager

**Jan Falden**

[jf@fibertex.com](mailto:jf@fibertex.com)

Direct phone +45 96 35 35 09

Mobile +45 40 72 96 43

