

Sewage work in Großglattbach



In Großglattbach, Germany, a sewage work was constructed in July 1998. A surface that was resistant to penetration and durable to repeated high pressure cleaning was specified. Furthermore a void-free surface was required.

Figure 1. The formwork lined with Formtex® before casting of a wastewater tank for the sewage work.

Process

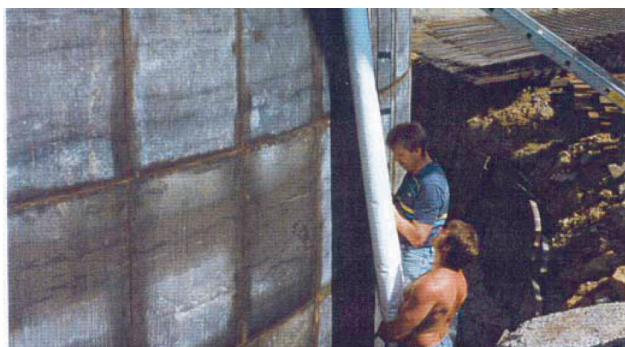


Figure 2. The roll is prepared for tensioning.

Formtex® was used for this project. The liner was only used once as a new tensioning method was tested.

Follow-up



Figure 3. The liner is tensioned with clamps.

A new tensioning method was used: Formtex® was rolled around the formwork and tensioned vertically.